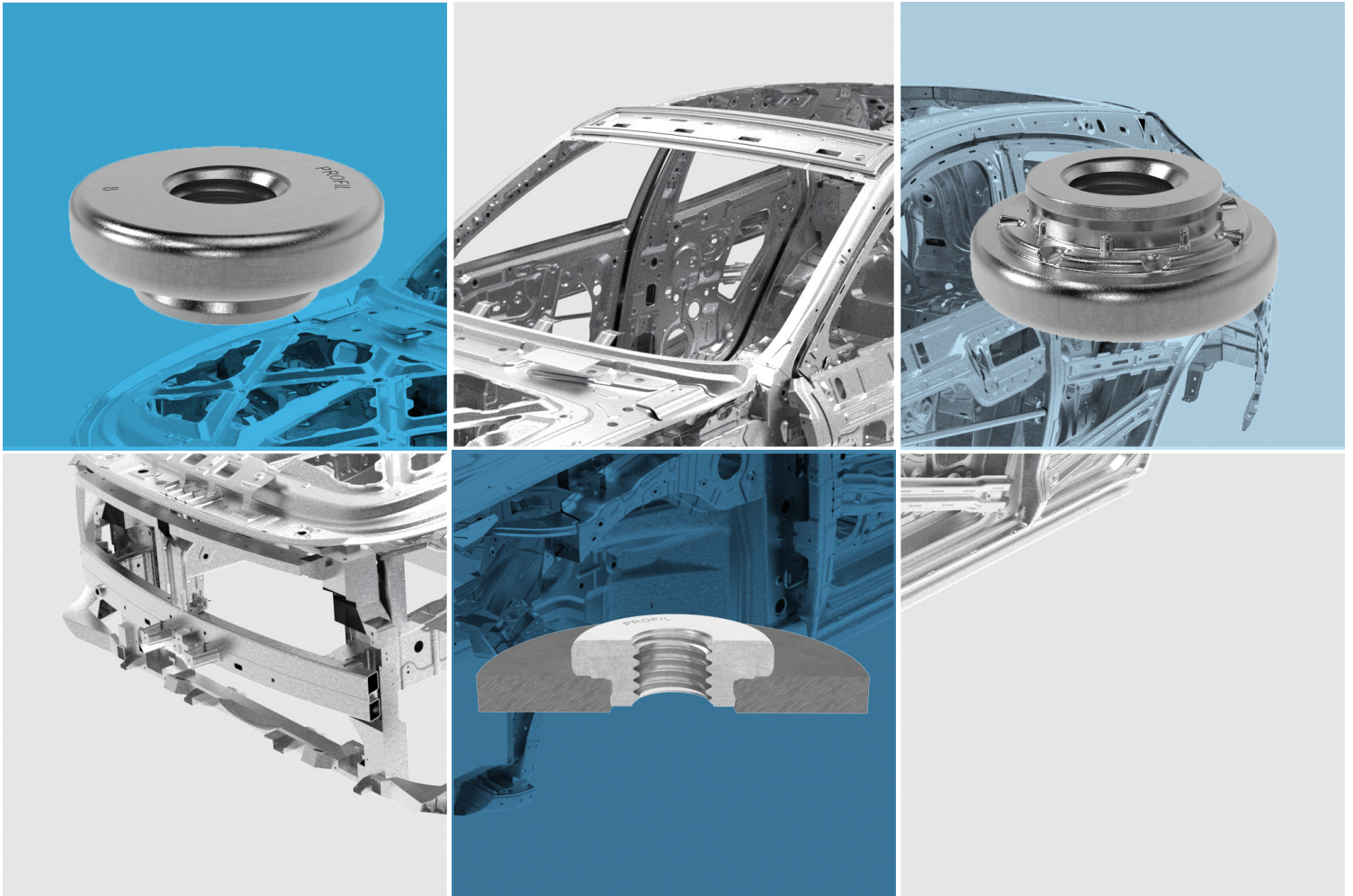


PROFIL EMF® Clinch Nut



Your System Supplier for Mechanically Attached Fasteners (MAF)

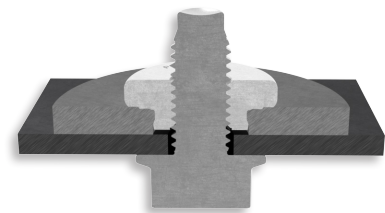
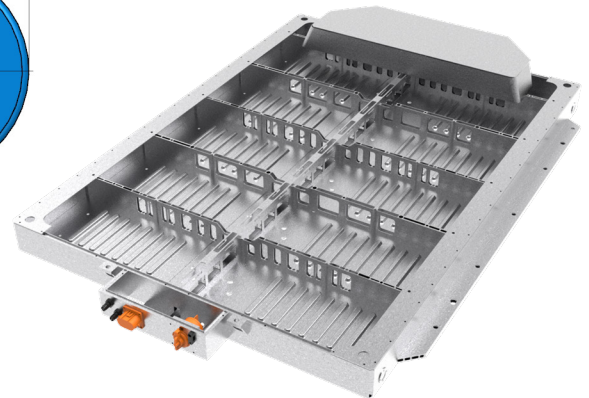
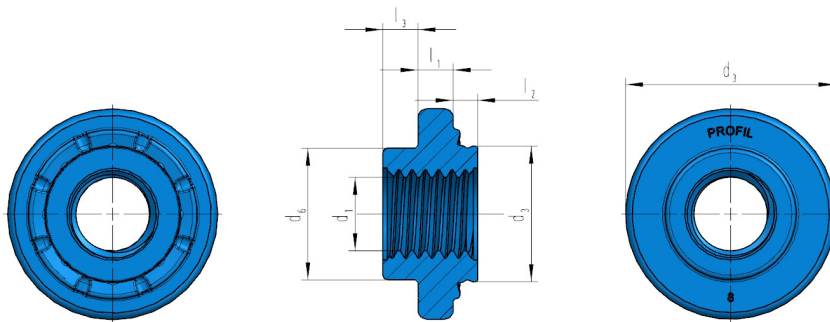


Scan QR code for more information

PROFIL EMF® Clinch Nut

Technical Product Data Sheet

Thread size	M6 to M12
Thread tolerance	6G 6H
Property class	8
Panel thickness	From 3.0 mm
Panel tensile strength	Up to 325 MPa
Panel preparation	Pre-pierced
Geometrically conforming to	DIN EN ISO 898-2:2023-02
Surface coating	OEM approved
Watertightness	Leak rate <math> < 5 \cdot 10^{-3}</math> mbar · l/s (IP67)
Thread repair	Repairable with standard wire thread inserts
Torque-out resistance	High
Push-out resistance	High
Installation methods available	Fully automated in die, Body in White (BIW), Manual



Body	EMF06	EMF08	EMF10	EMF12
Thread (d ₁)	M6	M8	M10	M12
Pitch	1.0	1.25	1.5	1.75
Ød ₃ [mm]	9.7	12.9	15.5	18.5
d ₅ [mm]	16.5	20.5	24.0	28.0
Ød ₆ [mm]	—	—	15.0	18.0
l ₁ [mm]	2.8	3.8	4.0	5.0
l ₂ [mm]	2.8	2.8	2.8	2.8
l ₃ [mm]	—	—	4.0	4.0

PROFIL System Inc.
 5331 Dixie Highway
 Waterford, MI 48329 USA
 Tel: +1 248 599 3700
 Email:
sales.profil.na@pemnet.com

PROFIL Verbindungstechnik
 GmbH & Co. KG
 Otto-Hahn-Straße 22 - 24
 61381 Friedrichsdorf DE
 Tel: +49 (0) 61 75 / 79 90
 Email: info@profil.eu

PROFIL China
 1895 West Zhonghuayuan Road
 Kunshan New District
 Jiangsu Prov. 215300 China
 Tel: +86 512-5035-9080
 email: info@profil.eu