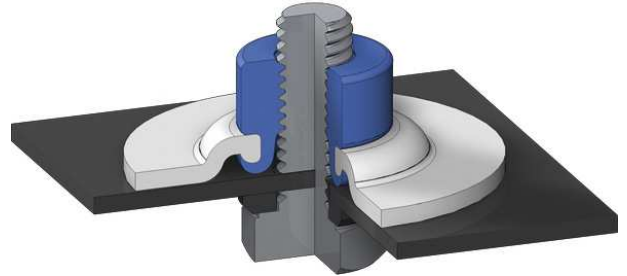
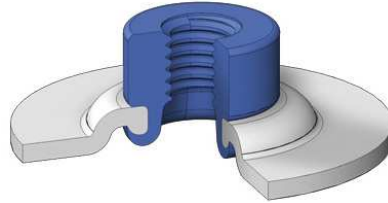




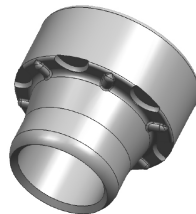
## Round rivet nuts with flange



- When high push out forces are required.
- Suitable for use where threaded fittings need to be resistant to high axial forces.




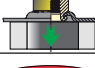

cylindrical rivet section



conical rivet section

### Technical features

- Thread sizes M6 - M12.
- Rivet nuts can be universally used for various sheet metal thicknesses up to 4.00 mm.
- Ideal for tensile, compression and alternating loads in axial direction.
- High resistance to twist and ejection forces, even for thin sheet metal.

Mechanical properties		
Push out force		<input type="checkbox"/> low <input checked="" type="checkbox"/> medium <input type="checkbox"/> high
Pull through force		<input type="checkbox"/> low <input checked="" type="checkbox"/> medium <input type="checkbox"/> high
Torque*		<input type="checkbox"/> low <input checked="" type="checkbox"/> medium <input type="checkbox"/> high
Tensile strength of the base material to be processed		Class 8 (up to 900 MPa). Class 10 (up to 1200 MPa)
Suitable for alternative materials		Yes
Suitable for repair work		Yes

Nut size		Smallest sheet thickness	Largest sheet thickness
M6	RSF06	0.75 mm	3.25 mm
M8	RSF08	0.75 mm	3.75 mm
M10	RSF10	1.00 mm	4.00 mm
M12	RSF12	1.00 mm	4.00 mm

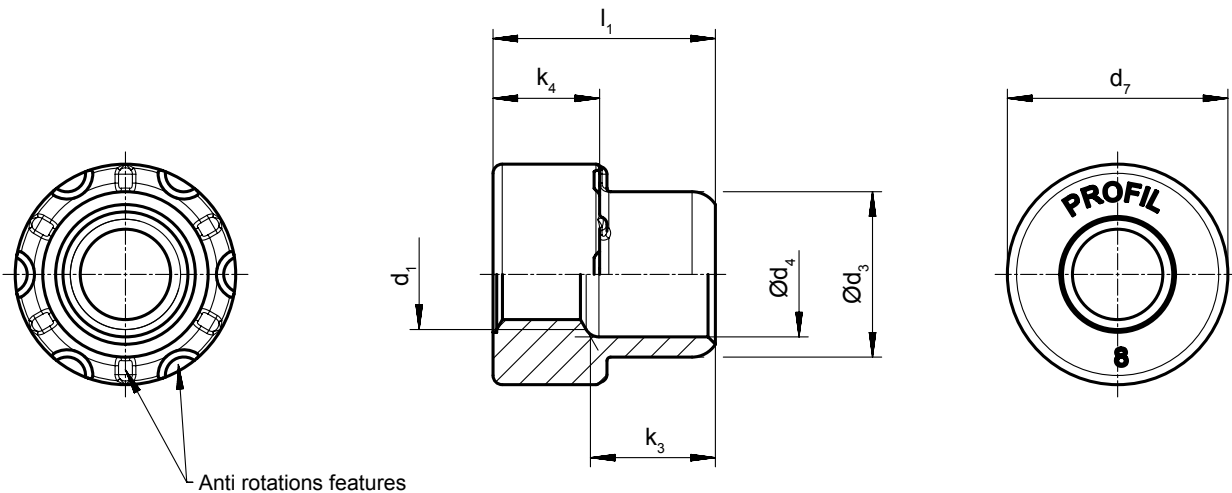
It may be possible to use RSF rivet nuts for sheet-metal thicknesses lying outside the thickness range specified above.

Please contact PROFIL to clarify the usage possibilities.

\*See PN-RSF 01.2 for information on recommended tightening torques

Information on processing	Processing direction	From above	Yes
		From below	Yes
		Angular position possible via wedge slide**	Yes
	Sheet preparation	Pre-form	Yes
		Pre-pierce	Yes
	Processing	Self-piercing	No
Clinching		No	
Riveting		Yes	

\*\*Not included in PROFIL's scope of delivery. No designing of the wedge slide by PROFIL.



**Table: Dimensions**

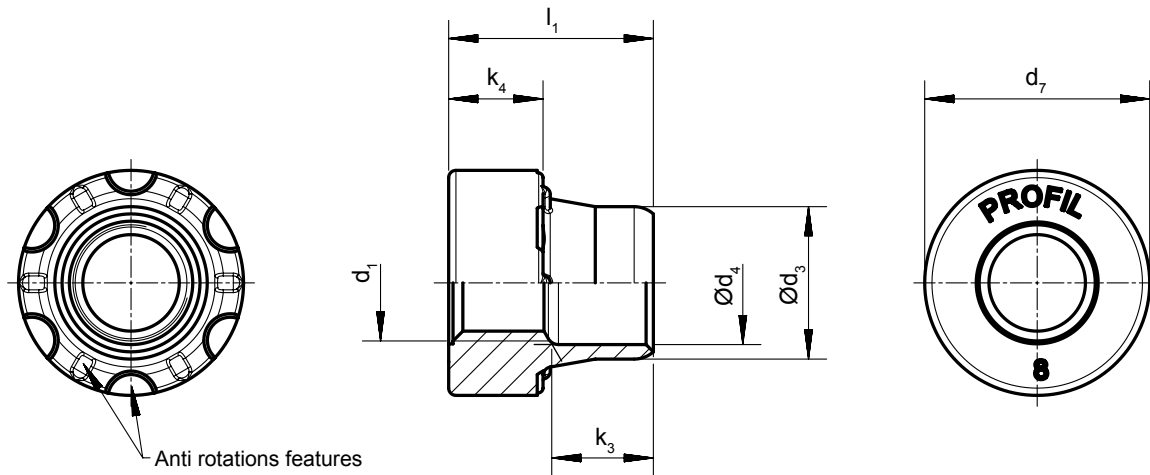
Body	RSF06	RSF08	RSF10	RSF12
Thread (d <sub>1</sub> )	M6	M8	M10	M12
Pitch	1.00	1.25	1.25 / 1.50	1.50 / 1.75
Ø d <sub>3</sub> [mm]	9.0	10.5	14.0	16.0
Ø d <sub>4</sub> [mm]	6.8	8.5	10.8	12.8
d <sub>7</sub> [mm]	12.0	15.5	19.0	21.0
k <sub>3</sub> [mm]	6.8	7.0	9.9	10.0
k <sub>4</sub> [mm]	5.8	6.5	10.0	11.5
l <sub>1</sub> [mm]	12.1	14.1	18.5	20.4

Rivetting application: Nut in sheet metal see PN-RSF 02.0.

Standard condition at delivery:

- Property class 8 acc. DIN EN ISO 898-2
- Uncoated (bare) surface
- Thread tolerance 6G

Upon request, alternative conditions at delivery and different thread dimensions can be accommodated, and nut bodies without threads for self-tapping screws can be supplied.



**Table: Dimensions**

Body	RSF06	RSF08	RSF10	RSF12
Thread ( $d_1$ )	M6	M8	M10	M12
Pitch	1.00	1.25	1.25 / 1.50	1.25 / 1.75
$\varnothing d_3$ [mm]	9.0	10.5	14.0	16.0
$\varnothing d_4$ [mm]	6.8	8.5	10.8	12.8
$d_7$ [mm]	12.0	15.5	19.0	21.0
$k_3$ [mm]	6.8	7.0	9.9	10.0
$k_4$ [mm]	5.8	6.5	10.0	11.5
$l_1$ [mm]	12.1	14.1	18.5	20.4

Rivetting application: Nut in sheet metal see PN-RSF 02.0.

Standard condition at delivery:

- Property class 8 acc. DIN EN ISO 898-2
- Uncoated (bare) surface
- Thread tolerance 6G

Upon request, alternative conditions at delivery and different thread dimensions can be accommodated, and nut bodies without threads for self-tapping screws can be supplied.

## PROFIL Verbindungstechnik

GmbH & Co. KG

Otto-Hahn-Straße 22 - 24

D-61381 Friedrichsdorf

Tel.: +49 (0) 61 75 / 79 90

Fax: +49 (0) 61 75 / 77 94

E-Mail: [info@PROFIL.eu](mailto:info@PROFIL.eu)

Internet: [www.PROFIL.eu](http://www.PROFIL.eu)



## PROFIL (UK) Ltd.

Unit 11 Melchett Road

Kings Norton

Birmingham B30 3HG

Phone: +44 (0) 121 389 8332

E-mail: [profil-uk@profil.eu](mailto:profil-uk@profil.eu)

Internet: [www.PROFIL.eu](http://www.PROFIL.eu)



## PROFIL System Inc.

24415 Halsted Road

Farmington Hills, MI 48335

USA

Phone: +1 248 53 62 130

E-mail: [info@profil.us](mailto:info@profil.us)

Internet: [www.PROFIL.eu](http://www.PROFIL.eu)

