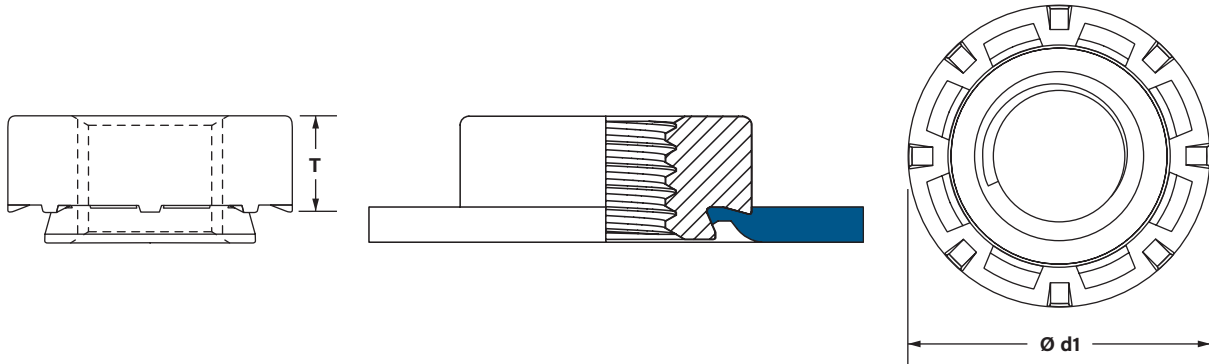


Round clinch nuts for thin and thick aluminum applications

- Available in 6mm to 12mm thread sizes
- Self-clinching and automatically fed
- Clinch into aluminum from 1.20mm to 5.0mm
- Can be used in all areas of the vehicle
- Unique design results in a secure, permanent installation with high torque performance
- Available in bulk and tape form
- Meet ISO Class 10 requirements



Dimensions are in millimeters

Clinch Nut Series	Part Number	Thread Size (6g tolerance)	Property Class Grade	Metal Range	Installation Load (Tons)	Ø d1 Nut Diameter (Max.)	T Nut Thickness (Max.)
A9N06	A9N6M121E	M6 x 1.0	10	1.20 - 1.99	10 - 15	16.75	3.93
	A9N6M201E			2.00 - 2.99			
	A9N6MAA1			2.75 - 4.00			
A9N08	A9N8M151E	M8 x 1.25	10	1.45 - 1.99	15 - 20	19.80	5.33
	A9N8M201E		10	2.00 - 2.99			5.33
	A9N8MAC1		10	2.00 - 2.99			7.33
	A9N8M301E		10	3.00 - 3.99			5.33
A9N10	A9N1M501E	M10 x 1.5	10	5.00 - 5.99	20	25.15	6.75
	A9N1M301E			3.00 - 3.99			
A9N12	A9N2M501E	M12 x 1.75	10	5.00 - 5.99	20	30.1	7.10

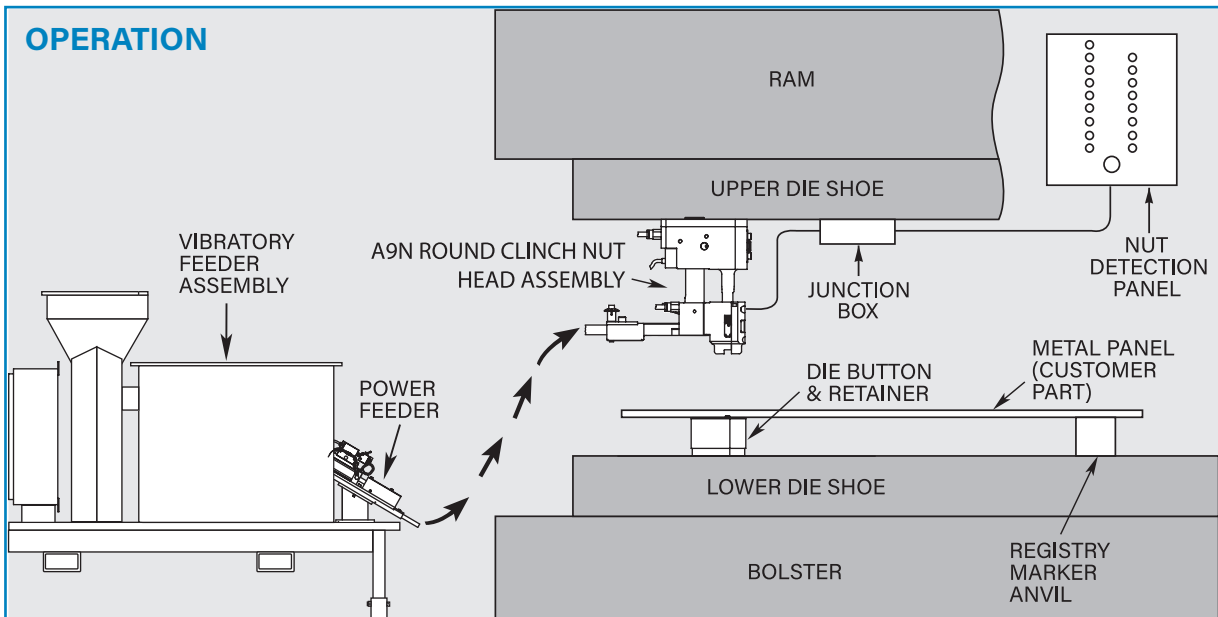
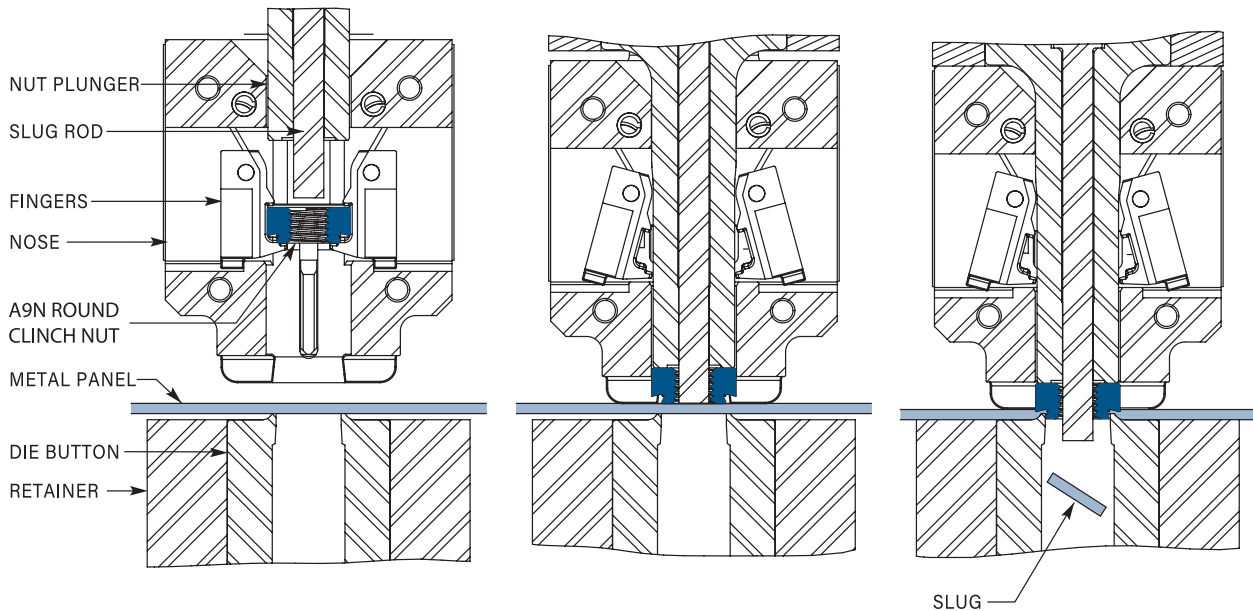
Self piercing is feasible in 5000 series aluminum. Pre piercing is required in 6000 series aluminum. Contact your sales representative for additional alloys and performance data.

INSTALLATION

1 The Clinch Nut is automatically placed in position in the installation tool (head) until the metal panel is in position with the die button underneath.

2 As the die closes, the plunger pushes the nut through the metal panel. The pilot area of the nut serves as the punch - virtually a new punch with every cycle of the press.

3 The die button forms the metal panel to lock the nut in place. The die-stamped blank (slug), cut by the pilot of the nut and assisted by the slug rod, drops through the die button as scrap.



All products meet our stringent quality standards. If you require additional industry or other specific [quality certifications](#), special procedures and/or part numbers are required. Please contact your local sales office or representative for further information.

Regulatory [compliance information](#) is available in Technical Support section of our website. Specifications subject to change without notice. See our website for the most current version of this bulletin.